

# APPRENTICESHIP PRICING

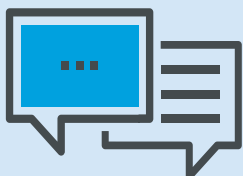
## FOR EMPLOYERS



### WELCOME TO INTERSERVE LEARNING AND EMPLOYMENT

- ✓ Small and medium companies only pay 10% of the total value - the Government picks up the rest
- ✓ Are you a large company with a payroll of over £3m per year? If so, talk to our team about the options available to you
- ✓ Is your apprentice aged 16-18? You will be eligible for a £1,000 cash payment from the Government
- ✓ Do you have fewer than 50 employees? If so, then you will be eligible for a £1,000 cash payment and the government will waive your 10% contribution making the training free to you, If taking on a young person aged 16-18 years old
- ✓ Did you know that all apprentices aged under 25 get National Insurance breaks from the Government? This is worth £1,300 per year for an apprentice on £18,000!

Apprenticeship Course	Standard or Framework	Level	Course length (Months)	Total Apprenticeship Value (£) <sup>1</sup>	Option 1	Option 2	
					Total Employer Contribution (£ Ex VAT)	Deposit (£ Ex VAT)	Monthly Payments (x5) (£ Ex VAT)
<b>CHILDCARE &amp; EDUCATION</b>							
Supporting Teaching & Learning	F	2	12	2,000	200	50	30
Supporting Teaching & Learning	F	3	12	2,500	250	62.50	37.50
Children & Young People's Workforce	F	2	12	2,000	200	50	30
Children & Young People's Workforce	F	3	12	2,500	250	62.50	37.50
Early Years Educator	F	3	12	2,500	250	62.50	37.50
Residential Childcare	F	3	12	2,500	250	62.50	37.50
<b>HAIR &amp; BARBERING</b>							
Hair Professional: Barbering	S	2	18	9,000	900	225	135
Hair Professional: Hairdressing	S	2	18	9,000	900	225	135
<b>HEALTH &amp; SOCIAL CARE</b>							
Adult Care Worker	S	2	12-18	3,000	300	75	45
Lead Adult Care Worker	S	3	12-18	3,000	300	75	45



### GET IN TOUCH WITH US

📞 0333 444 3973

✉️ ILE.ENQUIRIES@INTERSERVE.COM

More courses overleaf

Apprenticeship Course	Standard or Framework	Level	Course length (Months)	Total Apprenticeship Value (£) <sup>1</sup>	Option 1	Option 2	
					Total Employer Contribution (£ Ex VAT)	Deposit (£ Ex VAT)	Monthly Payments (x5) (£ Ex VAT)
<b>MERCHANTING</b>							
Trade Supplier	S	2	12	4,000	400	100	60
<b>PROFESSIONAL APPRENTICESHIPS</b>							
Customer Service Practitioner	S	2	26	4,000	400	100	60
Associate Project Manager	S	4	18	9,000	900	225	135
Operational / Departmental Manager	S	5	26	9,000	900	225	135
Team Leader / Supervisor	S	3	12-18	5,000	500	125	75
HR Support	S	3	18	5,000	500	125	75
HR Consultant / Partner	S	5	26	9,000	900	225	135
Business Administrator	S	3	13	5,000	500	125	75

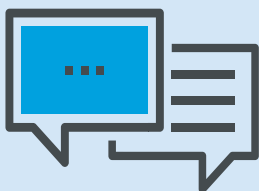


## PAYMENT OPTIONS

If you have to make a 10% contribution, you have 2 payment options:

- ✓ **Option 1:** you can pay in one lump sum
- ✓ **Option 2:** you can pay a 25% deposit, and then 5 equal payments

We accept BACS or Direct Debit. Details will be on your contract or order form. VAT is chargeable for your contribution only, at the current UK rate.



## GET IN TOUCH WITH US

📞 0333 444 3973

✉️ [ILE.ENQUIRIES@INTERSERVE.COM](mailto:ILE.ENQUIRIES@INTERSERVE.COM)

### THE FINE PRINT

Programme length is 'typical', individual circumstances are taken into account. Cash Payments for 16 - 18 year olds are paid in accordance with Government policy - at months 3 and 12, provided the learner is still on programme. You are also eligible for payment if you are 19-24 and a care leaver, or have an EHC plan provided by their local authority. Journey length is exclusive of 'End Point Assessment' - this is the assessment at the end of your the apprenticeship that allows graduation. It is undertaken by an independent company and typically takes 1-2 months. <sup>1</sup> Price subject to change.